



*CONNECTING THE R&I EU  
COMMUNITY*

*CREATING A STRONG AND  
EXPANDABLE NETWORK*

*BUILDING UP THE FUTURE OF  
SMART GRIDS*

*ENHANCING COLLABORATION AND  
KNOWLEDGE SHARING*



This project has received funding  
from the European Union's Horizon  
2020 Research and Innovation  
Programme under Grant Agreement  
No. 824389

**Pan European Technology Energy Research Approach**

# REGIONAL DESKS: MAGNA CARTA BOOKLET



---

# DEAR COLLEAGUES

---

PANTERA is a H2020 Coordination and Support Action which aims to foster Smart Grid Research and Innovation (SG R&I) by:

- **Developing enhanced knowledge-sharing mechanisms** to tackle the key R&I challenges for the energy transition.
- **Delivering ready-made tools** that will facilitate the collection of real data / results from on-going projects and the building of a useful shareable data repository.
- **Being an umbrella bringing together all European initiatives** focused on smart grids such as JRC, ETIP-SNET, ERA-NET SES etc.

PANTERA acknowledges how Regions are important to achieve these objectives therefore, we will set up and coordinate Regional Desks, so that their operation is fully aligned with the national/regional research and innovation strategy for smart specialisation (RIS3) in content and approach. RIS3 is a critically important activity that will support the PANTERA process through collaborative work within the region, as will be analysed within this booklet.

PANTERA Regional Desks' main objectives are:

- To link research and innovation with the regional priorities and competences in close cooperation with local actors.
- To link regions and local assets and capabilities to external sources of knowledge and value chains.
- To understand the local context and propose best practices that can be applicable for designing policies and strategies for regional and national goals.

Stakeholders that will participate in the PANTERA Regional Desks process and give their support will gain valuable access to SG R&I communities, initiatives and information.

This booklet includes all the necessary information to get an insight about the PANTERA Regional Desks mechanism, the main activities and how the engagement through this process can be beneficial for you and your organisation.

Yours sincerely

**PANTERA consortium**

---

# TABLE OF CONTENTS

<b>PANTERA CONSORTIUM</b>	<b>4</b>
.....	
<b>PANTERA CONCEPT</b>	<b>5</b>
.....	
<b>PANTERA PLATFORM</b>	<b>6</b>
.....	
<b>PANTERA REGIONAL DESKS</b>	<b>8</b>
.....	
THE PANTERA 6+1 APPROACH	<b>9</b>
.....	
PANTERA REGIONAL DESKS STRUCTURE	<b>11</b>
.....	
REGIONAL DESKS IN DETAIL	<b>13</b>
.....	
<b>YOUR BENEFITS</b>	<b>20</b>
.....	
<b>BECOME A PANTERA STAKEHOLDER</b>	<b>21</b>

# PANTERA CONSORTIUM

The project consortium is led by FOSS Research Centre for Sustainable Energy, University of Cyprus and consists of 9 partners from Germany, Italy, Norway, Latvia, Cyprus, Ireland and Bulgaria.



COORDINATOR: FOSS RESEARCH CENTRE FOR  
SUSTAINABLE ENERGY OF THE UNIVERSITY OF CYPRUS  
CYPRUS



DERLAB (EUROPEAN DISTRIBUTED ENERGY  
RESOURCES LABORATORIES)  
GERMANY



SUITE5 DATA INTELLIGENCE SOLUTIONS  
CYPRUS



RSE (RICERCA SUL SISTEMA ENERGETICO)  
ITALY



UCC-IERC (UNIVERSITY COLLEGE CORK INTERNATIONAL  
ENERGY RESEARCH CENTRE)  
IRELAND



IPE (INSTITUTE OF PHYSICAL ENERGETICS)  
LATVIA



SINTEF ENERGI AS  
NORWAY



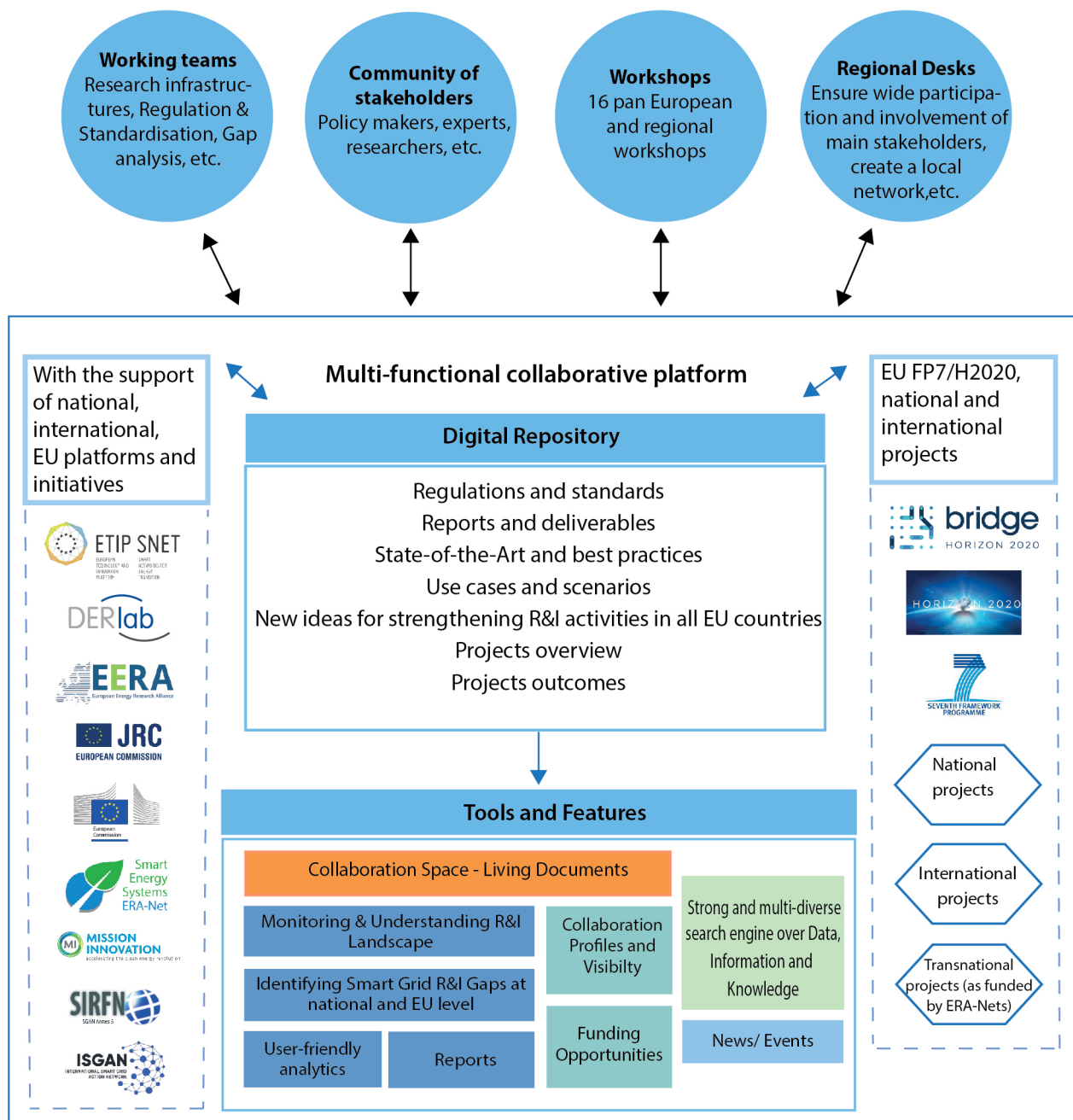
TUS (TECHNICAL UNIVERSITY OF SOFIA)  
BULGARIA



UCD (UNIVERSITY COLLEGE DUBLIN,  
NATIONAL UNIVERSITY OF IRELAND)  
IRELAND



# PANTERA CONCEPT



# PANTERA PLATFORM

The key objective of PANTERA interactive multi-functional platform is **to connect the EU R&I community** to enhance collaboration, wider interest and use of the project results, avoid redundancy and lost financing, strengthen the participation of all Member States in support of the fifth pillar of the Energy Union (Research, Innovation and Competitiveness) and energy transition mentioned in “A Framework Strategy for a Resilient Energy Union with a Forward-Looking Climate Change Policy”. All contributing entities will benefit through the enhanced connectivity and wider range of services to all beneficiaries and prospective users.



**Strong &  
Expandable  
Network**

---



**Building up the  
future on Smart  
Grids Domain**

---



**Strengthening the  
voices of local R&I  
Communities**

---



**Knowledge and  
exploitable data  
sharing**

---



**Multi-functional  
Platform**

---



**User-friendly  
interface**

---



**Strengthening  
local assets and  
regional priorities**

---



The UI (User Interface) of the platform will be developed and structured with the aim to provide a rich bundle of functionalities that are split into 4 different areas, which are summarized below:

### **A. DATA AREA**

Project-related results, such as project deliverables, reports, use cases and best practices collected for EU Research and Innovation projects. Also, datasets uploaded by researchers for opening them to EU research community, structuring the results / outcomes generated by R&I projects. In addition, EU and National standards and regulations are captured.

### **B. INFORMATION AREA**

Information on project-related data and metadata through the integration of the PANTERA platform with well-known and established platforms (including information stored in Gridinnovation, which does not exist anymore, referring to gap analyses of smart grid projects), accompanied by the deployment of data analytics and trends, and providing further insights on the domain of Smart Grids.

### **C. KNOWLEDGE AREA**

Know-how information captured into living documents, structured in thematic areas and sub-areas, derived from PANTERA community efforts and synergies with other key initiatives like ETIP SNET. Via living documents, also best practices of thematic areas and sub-areas are tracked, as well as the latest progress in Regulation and Standardization of those areas. Gap analyses and smart readiness indicator assessment of technologies resulting from the activities of WG5 of ETIP-SNET, will also be part of the available knowledge in this area.

### **D. ADDITIONAL FUNCTIONALITIES AREA**

Functionalities not directly linked to the above-mentioned areas, nevertheless contributing to the overall functionality of the PANTERA platform towards collaboration enhancement and promotion of R&I in all Member States.



# PANTERA REGIONAL DESKS



**The PANTERA 6+1 approach** is an integral part of the PANTERA process, which aims to strengthen national participation rates in smart grid investments by making national stakeholders' needs and expectations more visible on the European arena. It is a place for raising discussions with national decision-makers, sharing experience and challenges in research and innovation, inviting local stakeholders to interact more actively with PANTERA and other EU-level initiatives. Thus, it is a key opportunity to achieve the PANTERA ambition of **creating a true pan-European R&I community that will respect and highlight each region competences and strengths.**



The PANTERA 6+1 approach includes six PANTERA Regional Desks targeting countries which appear to have a lower rate of smart grid investment, and one best-practice Desk elaborating on gathering and systemising good experiences in projects and R&I governance from more successful countries, that can be selectively replicated under matching frameworks (Figure 1 below). The term “Regional” describes the way the work is organised within the consortium rather than geographical division, it stresses the intention of PANTERA to be closer to the local stakeholders and adapt to the local processes and cultures, putting the regional strengths at the centre and uplifting them. A selected PANTERA partner is responsible for the host country and for the closer so-called associated countries.

# PANTERA 6+1



FIGURE 1: PANTERA 6+1 APPROACH



## **PANTERA REGIONAL DESKS STRUCTURE**

The six main Desks will serve as a PANTERA project's contact point for all potential stakeholders from the defined region and for any other interested stakeholders from other countries. The Desk leader, i.e. the relevant project partner, is responsible for the Desk operation and for establishing working relations with an active stakeholder who will act as a contact person for the relevant associated country's stakeholders.

The Desk is a dynamic structure, where contact persons and stakeholders may join and express different level of activity and commitment during the desks' implementation. It supports the organisation of stakeholder consultations and workshops, dissemination activities on a regional level, generating country specific reports and publications, developing and updating the PANTERA country profiles. Through this process, the regional contexts will be provided for the PANTERA Working Teams and the PANTERA Platform.

The additional best-practice Desk serves as an information hub for gathering successful practical experience and knowledge, which may be utilised for benchmarking and accumulating lessons learned. The work performed within the best-practice Desk completes the PANTERA national level activities in the target countries and supports the PANTERA process, by providing valuable information in a structured way.

The Desks' structure and tasks are illustrated in Figure 2 below.

# PANTERA REGIONAL DESKS' STRUCTURE AND TASKS

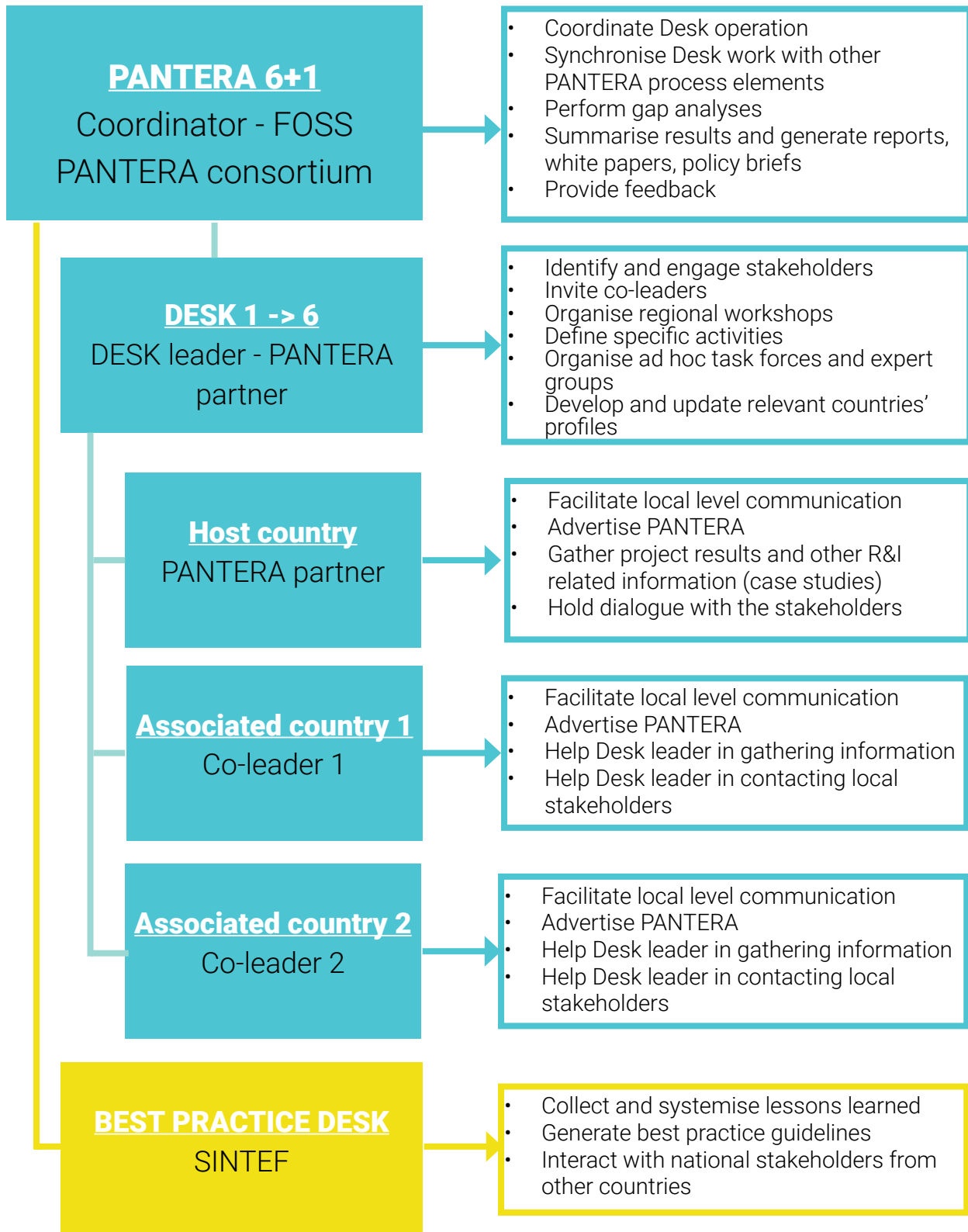


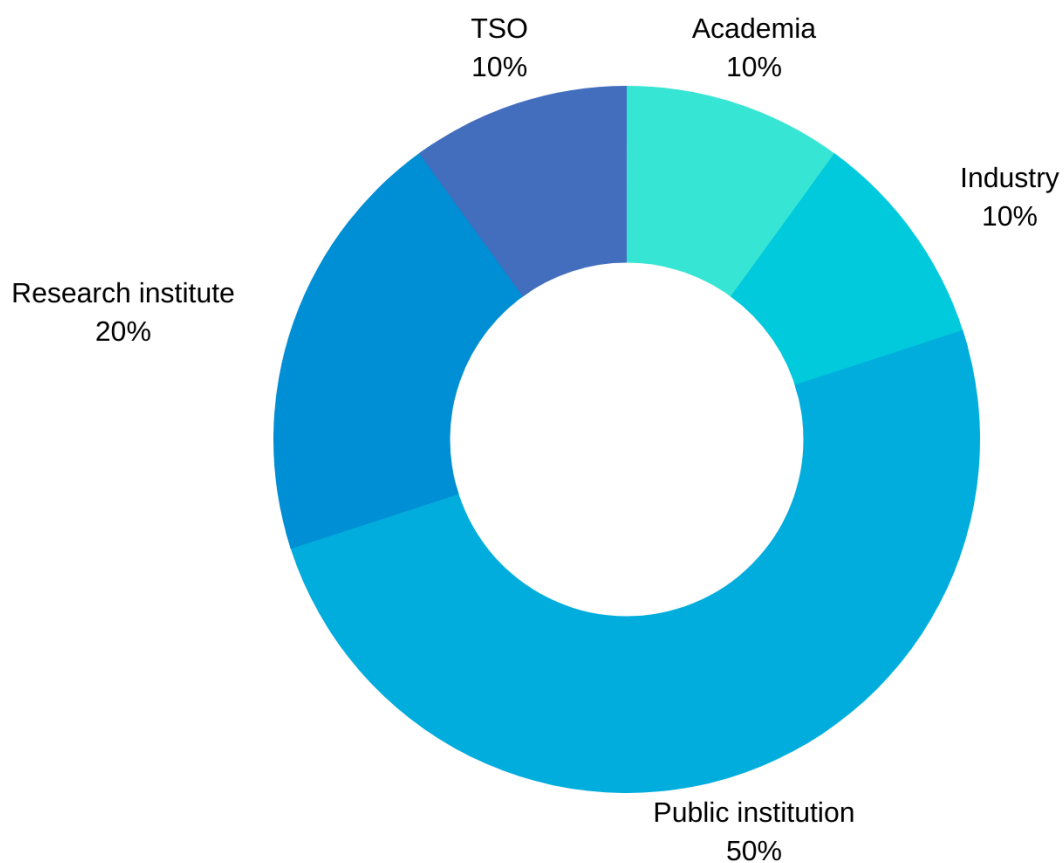
FIGURE 2: STRUCTURE AND SCOPE OF WORK OF PANTERA REGIONAL DESKS

# REGIONAL DESKS IN DETAIL

**Regional desk 1: Latvia/Estonia/Lithuania**

**Leader: Institute of Physical Energetics (IPE)**

**Members-organisations**

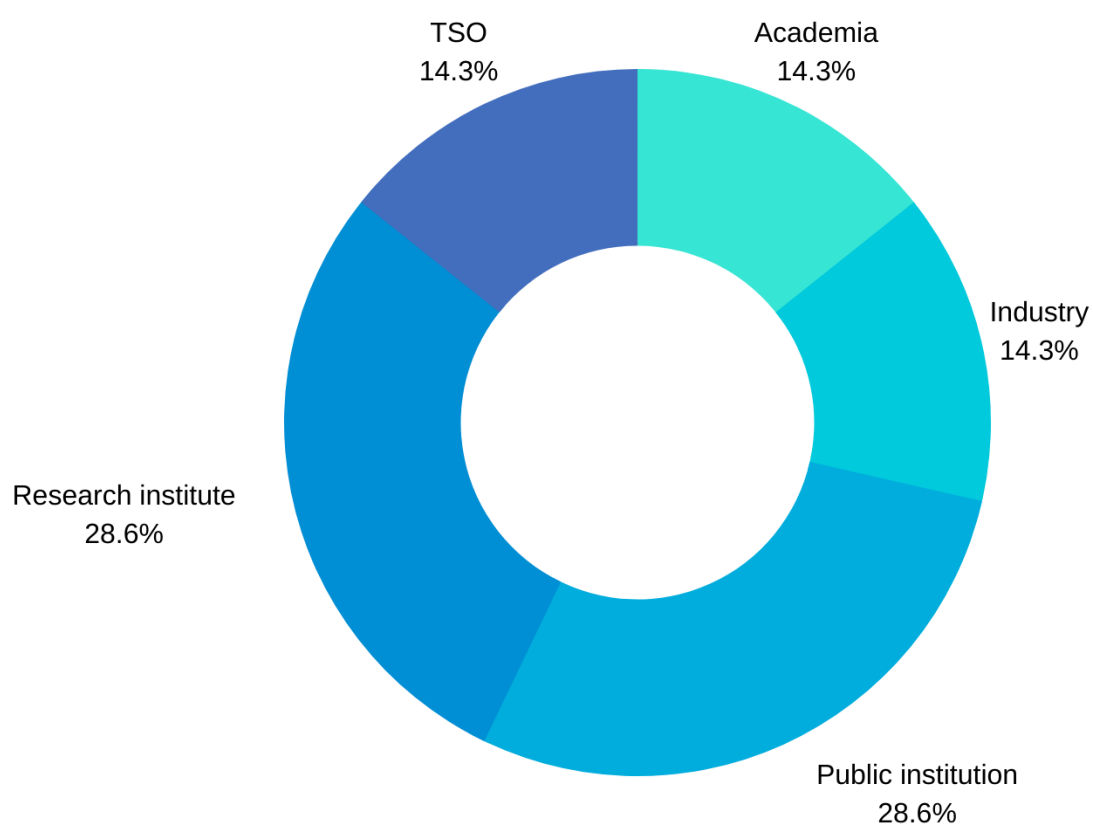




## Regional desk 2: Bulgaria, Romania, Greece

**Leader: Technical University of Sofia**

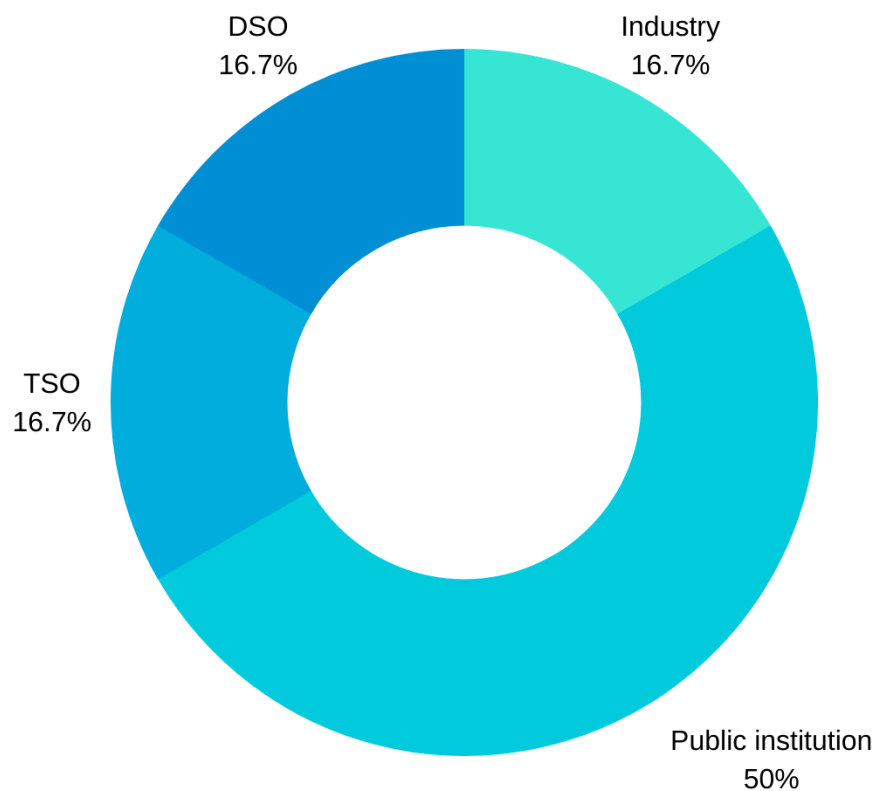
### Members-organisations



## Regional desk 3: Cyprus/Malta

**Leader: FOSS Research Centre for Sustainable Energy**

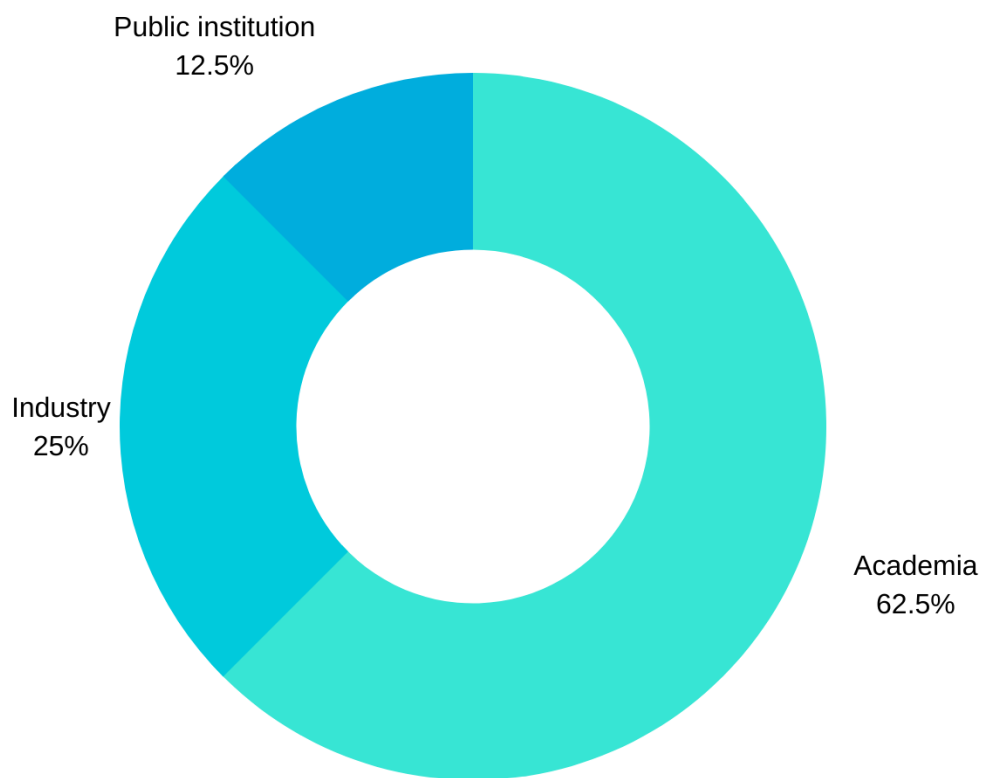
### Members-organisations



## Regional desk 4: Poland/Slovakia/Czech Republic

**Leader: DERlab**

### Members-organisations

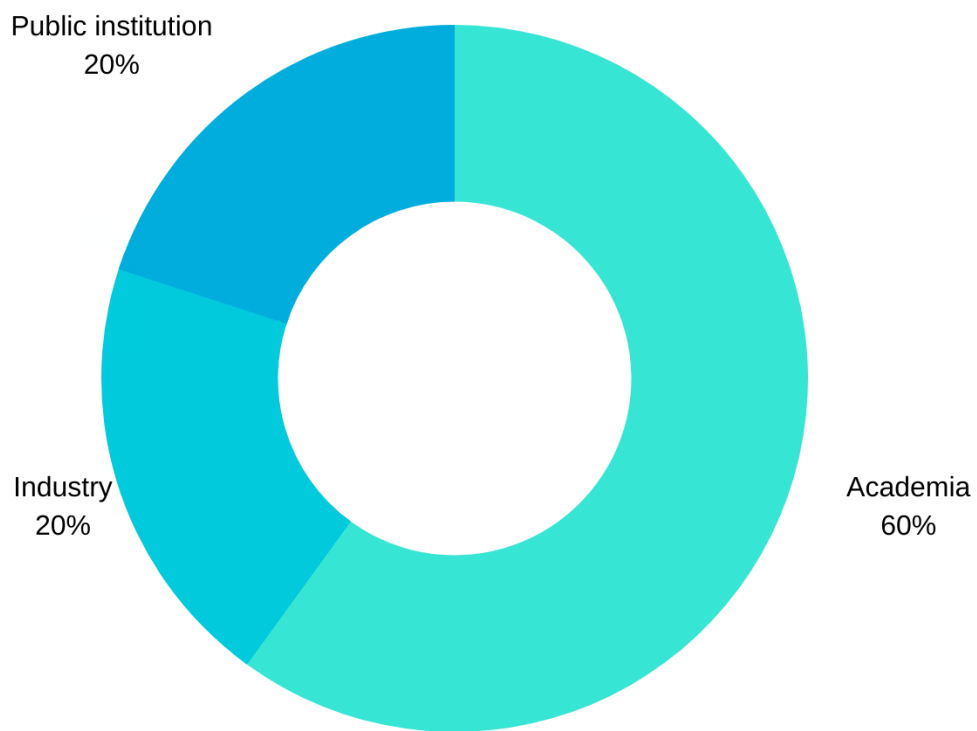




## Regional desk 5: Hungary/Croatia/Italy

**Leader: RSE**

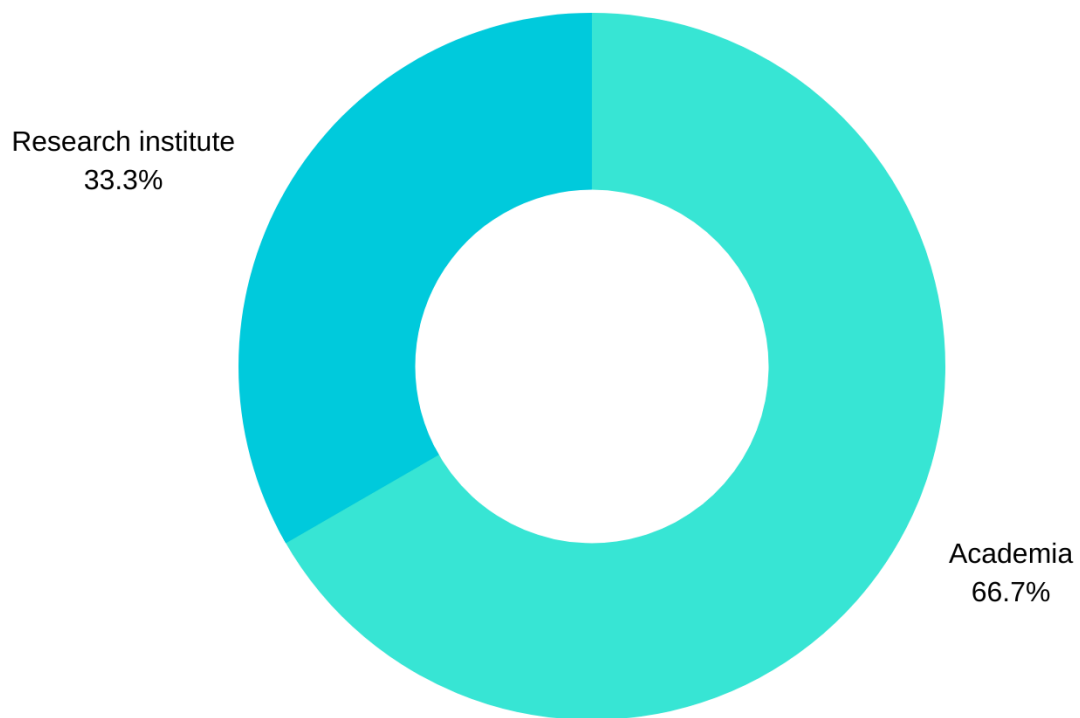
**Members-organisations**



## Regional desk 6: Ireland/Portugal

**Leader: University College Dublin**

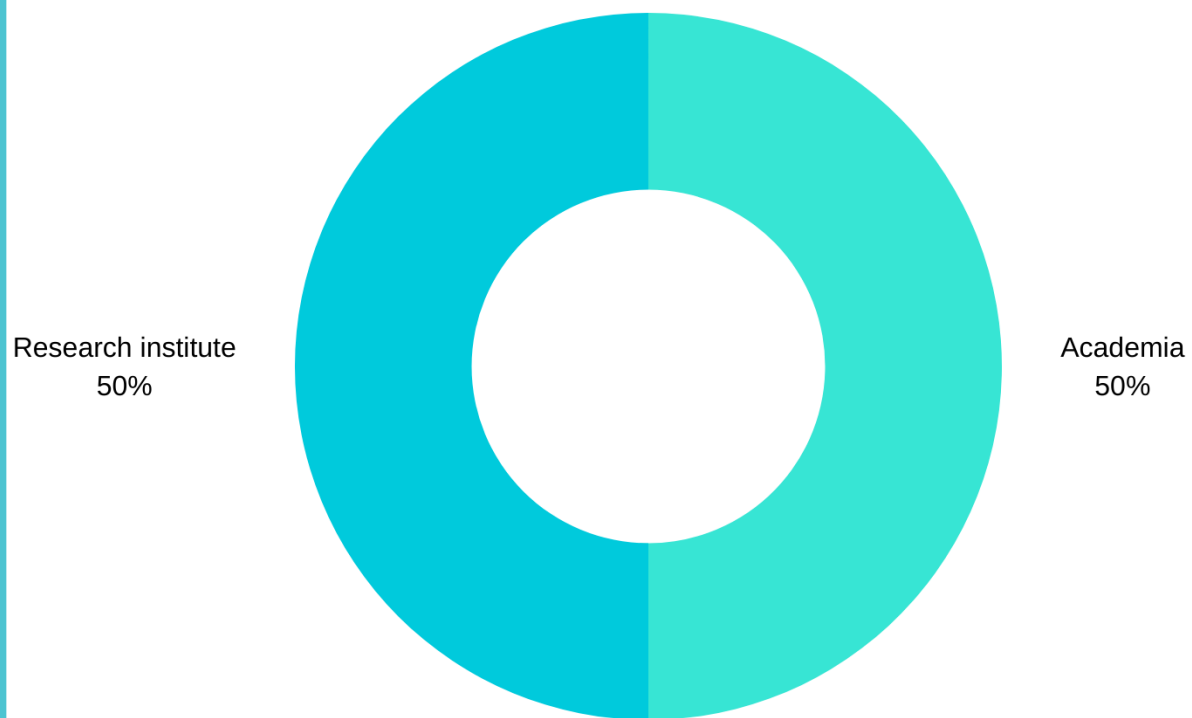
### Members-organisations



**Best practice desk**

**Leader: SINTEF**

**Members-organisations**





# YOUR BENEFITS

Your support is key for our **Regional Desks** mechanism.

The benefits that you and your organisation will enjoy being part of this strengthened community within your region, can be summarised as follows:



**Open-access** to workshops and networking activities at regional and pan-European level.



**Increase the visibility of regional interests and priorities in SG R&I** to a wider audience, European associations and the EC, leading to enhanced influence on **policy decisions on R&I**.



Build regional interest in **co-funding opportunities** in R&I through access to the ERA NET SES process.



Possibility of being engaged in **PANTERA working activities with highly prestigious EU initiatives**.



**Safeguard access to SETPLAN and EC classified information** through building up enhanced working relations with ETIP SNET and its Working Groups.



**Strengthen working relations with EC**, leading to enhanced possibility to shape the respective EU policies on R&I.



Access to documents and **extended exchange of information** between members of Regional Desks stakeholders and associated associations via the PANTERA (IT) platform.

**Feel free to access the PANTERA process webpage and declare your intention to be involved within the Regional Desk of your country to unlock the above potentials.**

# BECOME A PANTERA STAKEHOLDER

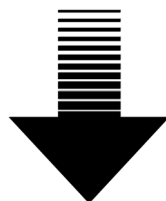
**Are you active in the fields of smart grids, storage or local energy systems?**

**Do you want to contribute to the establishment of a true Pan European energy community?**

**Your benefits in joining PANTERA**

- Networking with the consortium and stakeholders from all points of Europe.
- Identifying new business and research opportunities and new project partners.
- Participation in project events, workshops, webinars, etc.
- Sharing your projects outcomes at Pan European level
- Access to a Pan European level database

## Scan & Join





## Pan European Technology Energy Research Approach

Contact

[pantera-platform.eu](http://pantera-platform.eu)

**[contact@pantera-platform.eu](mailto:contact@pantera-platform.eu)**

